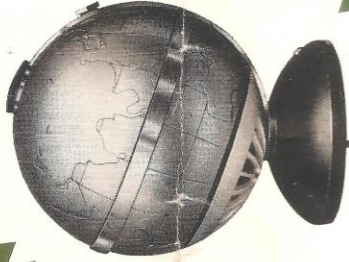


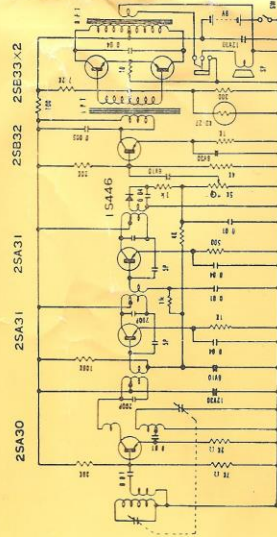
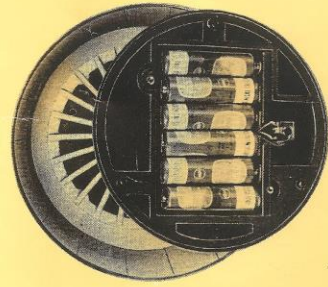
# INSTRUCTION



## FOR OPERATION OF GLOBE EXECUTIVE SIX TRANSISTOR RADIO

### TECHNICAL DATA

- Circuit:** Six transistors with one diode and one thermistor. Super-Heterodyne
- Receiving frequency:** 535~1605 kc/s
- Intermediate frequency:** 455 kc/s
- Output power:** 200 Milliwatts
- Antenna:** High Gain Ferrite core antenna
- Speaker:** 3-inch permanent Magnetic
- Earphone:** 8 ohms magnetic earphone
- Batteries:** 6 Eveready No. 915 1.5 volts
- Transistors:** Type PNP
- Weight:** 2.6 lbs. (Without Batteries)



Printed in Japan

## TRANSISTOR RADIO MODEL NTR-6G

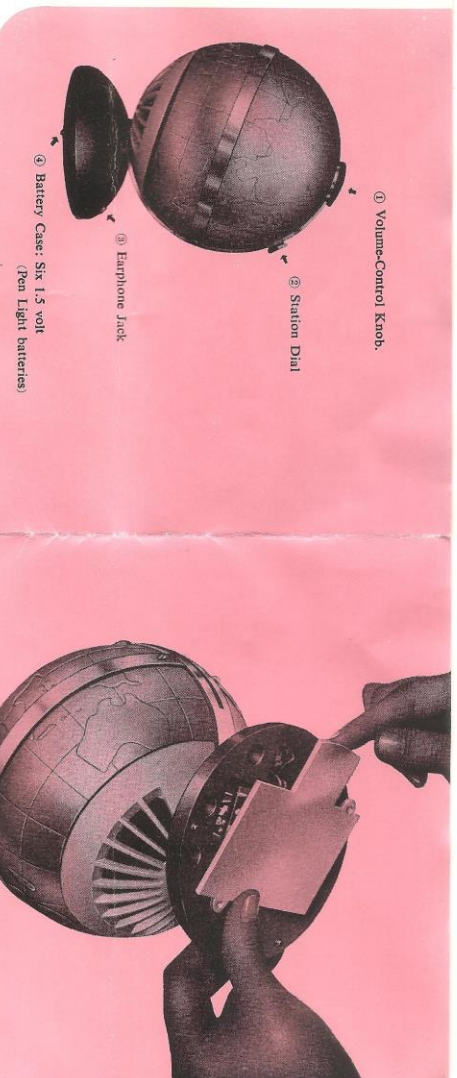
### DESCRIPTION

1. The Globe type transistor model NTR-6G is designed and produced in accordance with the most advanced electronic engineering. Thanks to its Globe shaped cabinet, it can accommodate powerful permanent magnetic 3 inch speaker, and provides rich and harmonic tone of distortion-free high resonating.

2. This radio is designed to operate on six pen-light batteries (1.5 volts each) interchangeable with eveready No. 915 or RCA VS No. 034, and operates from 150 to 200 intermittent hours.

### OPERATION

1. The knob on the top of the cabinet is ON-OFF switch and volume control knob. To turn on the radio, turn this knob in a clockwise until a click is heard. Further turning of this knob will increase the volume.
2. The knob on the side of the cabinet is the tuning knob. To select your desired station, move this knob slowly up or down to the desired station frequency.



### FOR EARPHONE LISTENING

Put the plug of the earphone into the earphone jack on the base of the radio as illustrated. It will cause the speaker to be automatically disconnected for complete private listening.

### FOR REPLACING BATTERY

By removing two set screws, the cover of the bottom battery compartment will easily be removed. Then replace all the six batteries. Be sure that all batteries are to be replaced in proper position in order not to change polarity of the batteries.

### IMPORTANT

1. In turning off the radio, be sure to turn the switch and volume control knob until a click is heard at OFF position. Merely turning of the knob until the sound disappears will not stop the operation of the set.
2. If the radio is left unused for a long time, you should remove all the batteries.

